



738 Highway 6 South

Memorial Six ■ Ten-Story Office Building ■ 156,716 Square Feet



PROPERTY OVERVIEW

Memorial Six is a striking, ten-story office building located in West Houston. With fully renovated common areas and restrooms, this property offers an attractive like-new office environment just south of I-10.

LOCATION

Located at the intersection of Memorial and Highway 6, Memorial Six is minutes from I-10 and offers its occupants timely access to Westpark Tollway and Beltway 8.

AMENITIES

- Beautifully renovated interior with natural stone finishes
- Full-service deli
- On-site management and building engineer
- 100% garage parking
- Dock-high freight entrance with freight elevator
- Fully sprinklered

PARKING

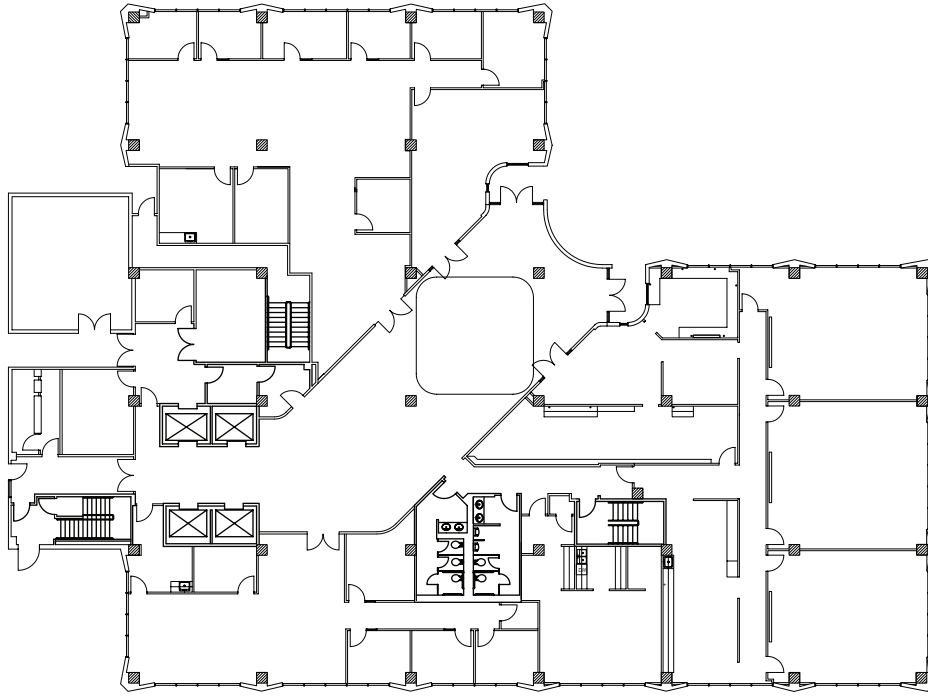
3.5/1,000

For information please contact:

Sheryl Crutchfield ■ P: 281.442.0333 ■ D: 281.453.5303 ■ E: SCrutchfield@aqueinvestmentgroup.com



INVESTMENT GROUP



738 Highway 6 South

For more information, please contact:

Sheryl Crutchfield

E: SCrutchfield@aqueinvestmentgroup.com

P: 281.442.0333

D: 281.453.5303

www.aqueinvestmentgroup.com



Aque Investment Group

350 Glenborough, Suite 138 ■ Houston, Texas 77067 ■ P: 281.442.0333 ■ F: 281.442.0339