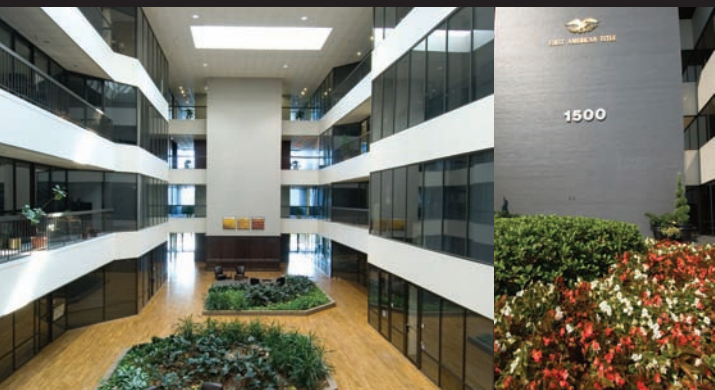




1500 S. Dairy Ashford

Ashford Place ■ Four-Story Office Building ■ 131,817 Square Feet



PROPERTY OVERVIEW

Ashford Place is located in the thriving Westchase District, surrounded by upscale residential neighborhoods, restaurants, and retail. With a highly landscaped open atrium and beautiful grounds, this four-story office property has everything to offer.

LOCATION

Located near the intersection of Briar Forest and Dairy Ashford, this property offers access to I-10, Westpark Tollway and Beltway 8.

AMENITIES

- Newly renovated building lobby
- On-site building engineer
- Covered parking
- DVR security system
- Vending area

PARKING

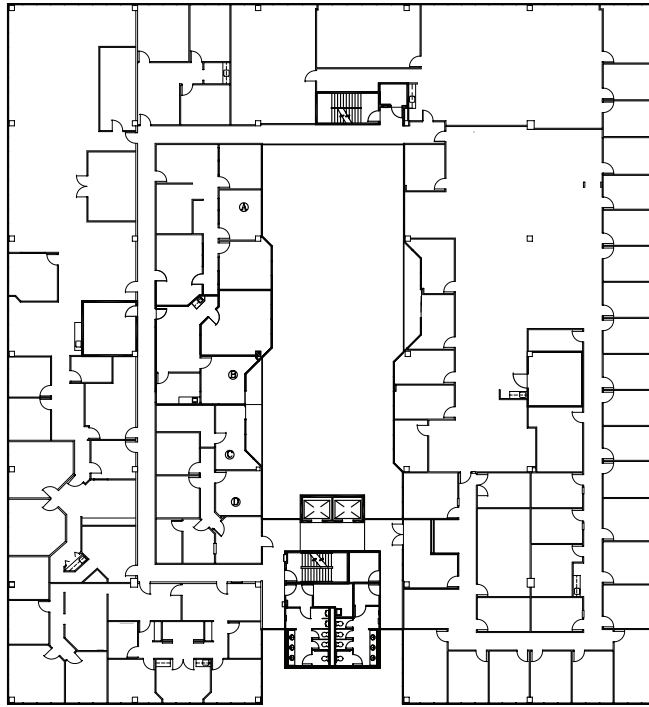
3/1,000

For information please contact:

Sheryl Crutchfield ■ P: 281.442.0333 ■ D: 281.453.5303 ■ E: SCrutchfield@aqueinvestmentgroup.com



INVESTMENT GROUP



1500 S. Dairy Ashford

For more information, please contact:

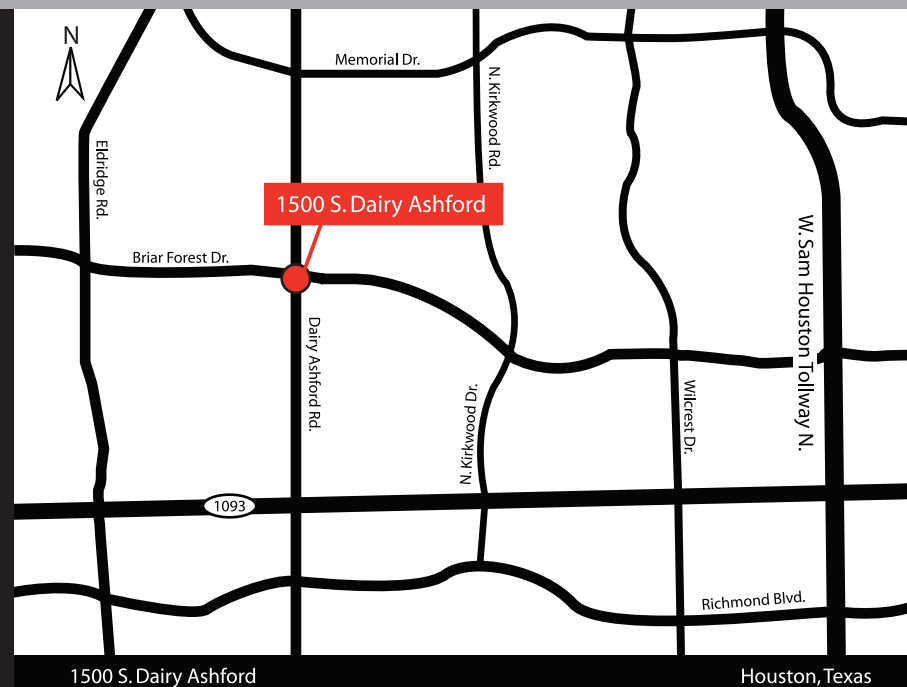
Sheryl Crutchfield

E: SCrutchfield@aqueinvestmentgroup.com

P: 281.442.0333

D: 281.453.5303

www.aqueinvestmentgroup.com



Aque Investment Group

350 Glenborough, Suite 138 ■ Houston, Texas 77067 ■ P: 281.442.0333 ■ F: 281.442.0339