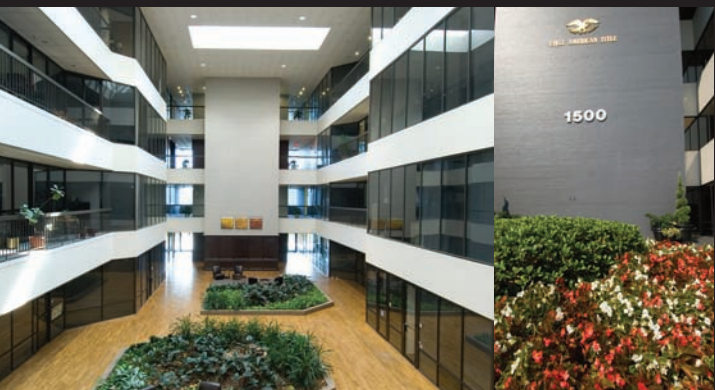




1500 S. Dairy Ashford

Ashford Place ■ Four-Story Office Building ■ 131,817 Square Feet



PROPERTY OVERVIEW

Ashford Place is located in the thriving Westchase District, surrounded by upscale residential neighborhoods, restaurants and retail. With a highly landscaped open atrium and beautiful grounds, this four-story office property has everything to offer.

LOCATION

Located near the intersection of Briar Forest and Dairy Ashford, this property offers access to I-10, Westpark Tollway and Beltway 8.

AMENITIES

- Newly renovated building lobby
- On-site building engineer
- Covered parking
- DVR security system
- Vending area

PARKING

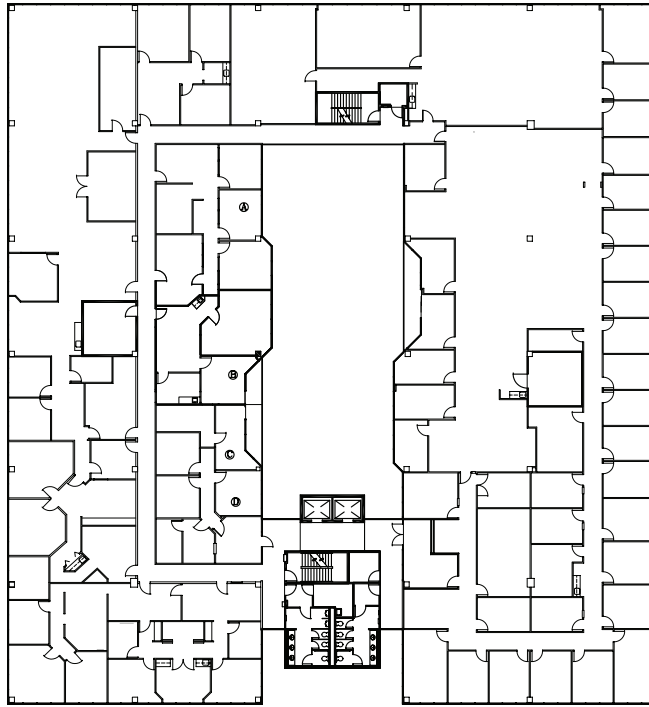
3/1,000

For information, please contact:

Glenna Duke, CCIM ■ P: 281.442.0333 ■ C: 713.824.8685 ■ E: GDuke@aqueinvestmentgroup.com



INVESTMENT GROUP



1500 S. Dairy Ashford

For more information, please contact:

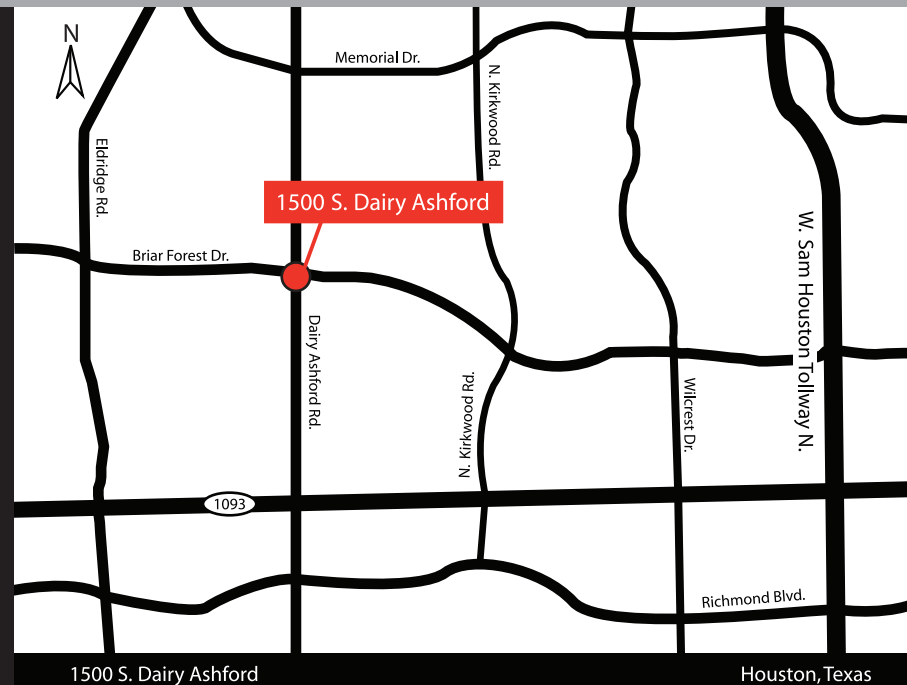
Glenna Duke, CCIM

E: GDuke@aqueinvestmentgroup.com

P: 281.442.0333

C: 713.824.8685

www.aqueinvestmentgroup.com



Aque Investment Group

12600 Northborough, Suite 280 ■ Houston, Texas 77067 ■ P: 281.442.0333 ■ F: 281.442.0339